



23 ch. Boom Lane, Unit/Unité E
 Industrial Park/Parc industriel
 Atholville, New/Nouveau-Brunswick
 Canada, E3N 4E8
 Tel/tél. : 1-888-212-1411/Fax/télec. : 1-888-789-0987
 go@kangaroo.com / www.kangaroo.com

Colors / Couleurs

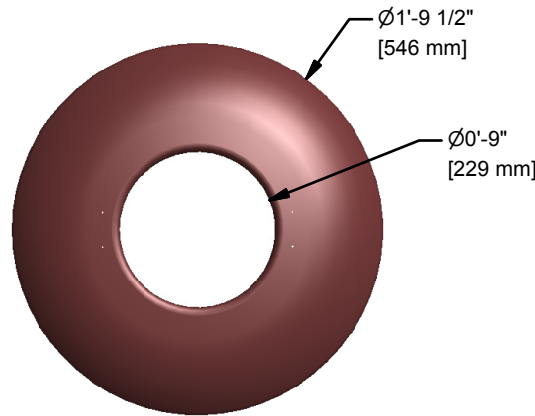
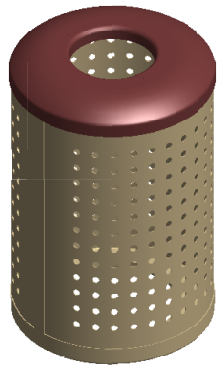
Color / Couleur : Tan / Beige

Accent Color / Couleur complémentaire:
 Brown / Brun

Removable to for easy servicing.
 Couverture amovible pour faciliter le service.

Recouverte d'une poudre de polyester TGIC.
 (Plusieurs couleurs disponible, parler a votre conseiller)

TGIC Polyester powder coat finish.
 (Other colors available, talk to your respresentative)



Ø1'-9 1/2"
 [546 mm]

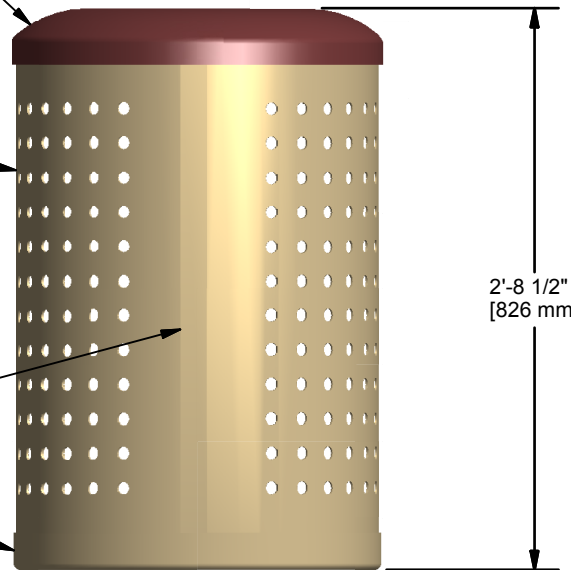
Ø0'-9"
 [229 mm]

Cover / Couvercle
 Aluminum 0.08" (2.03mm) Th.
 Aluminium 0.08" (2.03mm) Épais

Punched Aluminum 1/8" (3.18mm) Th.
 Aluminium perforé 1/8" (3.18mm) Épais

Aluminum Flar Bar 1/8" (3.18mm) Th.
 Plats en aluminium 1/8" (3.18mm) Épais

Bottom / Base
 Aluminum 0.08" (2.03mm) Th.
 Aluminium 0.08" (2.03mm) Épais



2'-8 1/2"
 [826 mm]

Kpark-32B

Dimensions / Dimensions :
 546mm (1'-9 1/2")Dia / 826mm (2'-8 1/2")

CAN/CSA-Z614-xx
 xx: Last Edition Published/
 Dernière édition publiée

Capacity / Capacité :
 20 Gallons / 91 Litres

Approval date: 14/05/2012
 Rev: 00
 Initial: TLG

