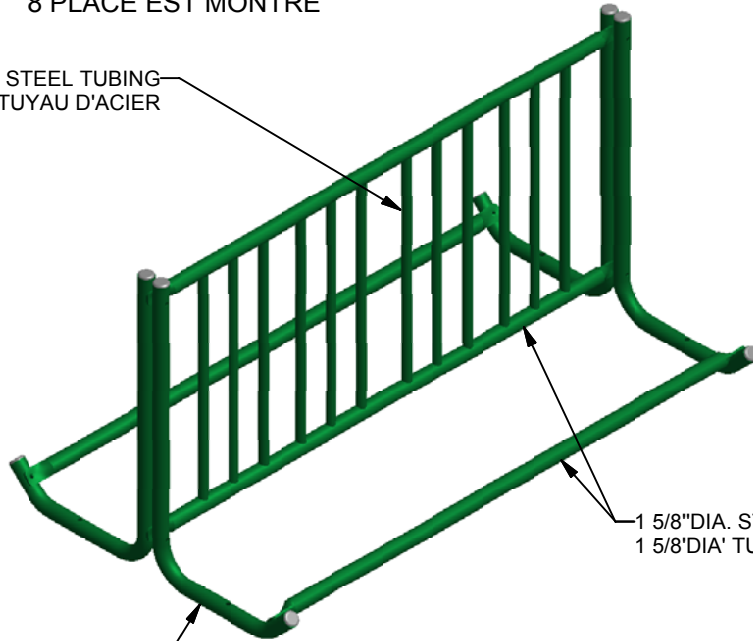


# Bicycle Rack / Porte Vélos

8 PLACES IS SHOWN /  
8 PLACE EST MONTRÉ

1" DIA. STEEL TUBING  
1" DIA TUYAU D'ACIER



1 5/8" DIA. STEEL TUBING  
1 5/8" DIA TUYAU D'ACIER

ALSO AVAILABLE / AUSSI DISPONIBLE

**Kpark-23Y-4** (4 PLACES)  
TO / À

**Kpark-23Y-24** (24 PLACES)  
AVAILABLE BY MULTIPLES OF 2 /  
DISPONIBLE EN MULTIPLE DE 2

- 4 places=35"L
- 6 places=45"L
- 8 places=60"L
- 10 places=72"L
- 12 places=85"L
- 14 places=98"L
- 16 places=112"L
- 18 places=125"L
- 20 places=137"L
- 22 places=150"L
- 24 places=165"L

1 5/8" DIA. STEEL TUBING  
1 5/8" DIA TUYAU D'ACIER

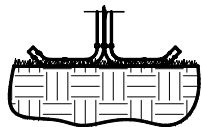


23 ch. Boom Lane, Unit/Unité E  
Industrial Park/Parc industriel  
Atholville, New/Nouveau-Brunswick  
Canada, E3N 4E8  
Tel/tél. : 1-888-212-1411/Fax/télec. : 1-888-789-0987  
go@kangoroo.com / www.kangoroo.com

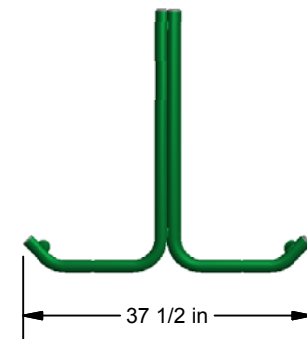
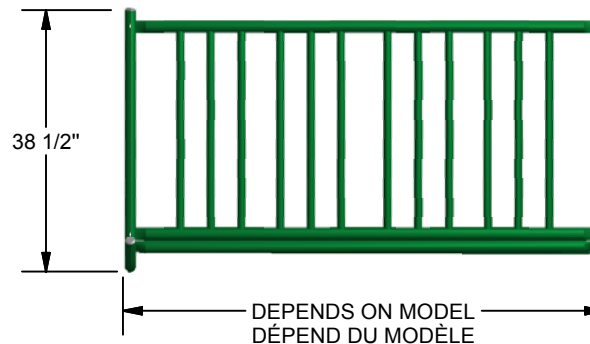
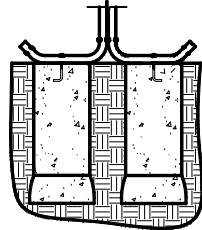
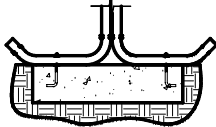
MATERIAL SPECIFICATION / SPÉCIFICATION DU MATÉRIEL	
MATERIAL / MATÉRIEL	SPECIFICATION / SPÉCIFICATION
STEEL / ACIER	-ALLIED PRE-GALVANISED COVERED WITH A POLYESTER POWDER PAINT. / PRÉ-GALVANISÉ "ALLIED" COUVERT D'UNE PEINTURE DE POUDRE DE POLYESTER.
	UNLESS NOTED OTHERWISE / SAUF AVIS CONTRAIRE

## INSTALLATION METHODS MÉTHODES D'INSTALLATION

PORTABLE  
PORTABLE



SURFACE MOUNT  
MONTAGE EN SURFACE



**Kpark-23Y**

Sonotubes & Concrete Recommendations/Recommandations de sonotubes et béton  
Sonotube of 12"Ø x 24"L / Sonotube de 12"Ø x 24"L : Depending on  
model / Dépend du modèle  
Concrete (cu. yd.) / Ciment (vge cu.) : Depending on model / Dépend  
du modèle

KAN-PARK

Equipment Dimensions / Dimensions de l'équipement :  
See Drawing / Voir dessin

Capacity / Capacité :  
4 to 24 Places - 4 à 24 Places / 8 Places is  
shown - 8 Places est montré

Approval date: 2010-04-21

Rev: 00

Initial: TLG

